



Reduce. Reuse. Divert. Repeat: Breaking the Disposable Culture

-
- Ryan J. Call - Eco-Cycle
 - Amelia Kovacs - Walking Mountains Science Center
 - Beth Markham - Town of Vail
 - Kathryn Slaughter - VERT Sites, LLC

Session Agenda

- Introduction and Purpose
- A Vision for Waste Reduction in Colorado
- Innovations in Waste Reduction
- Needs, Challenges, and Opportunities
- Share Out



Outcomes

- Emphasize the role of Waste Reduction
- Create a shared vision
- Share perspectives and make connections
- Post-summit: Compile a report



16%

Colorado's average municipal solid
waste diversion rate

Half the national average!

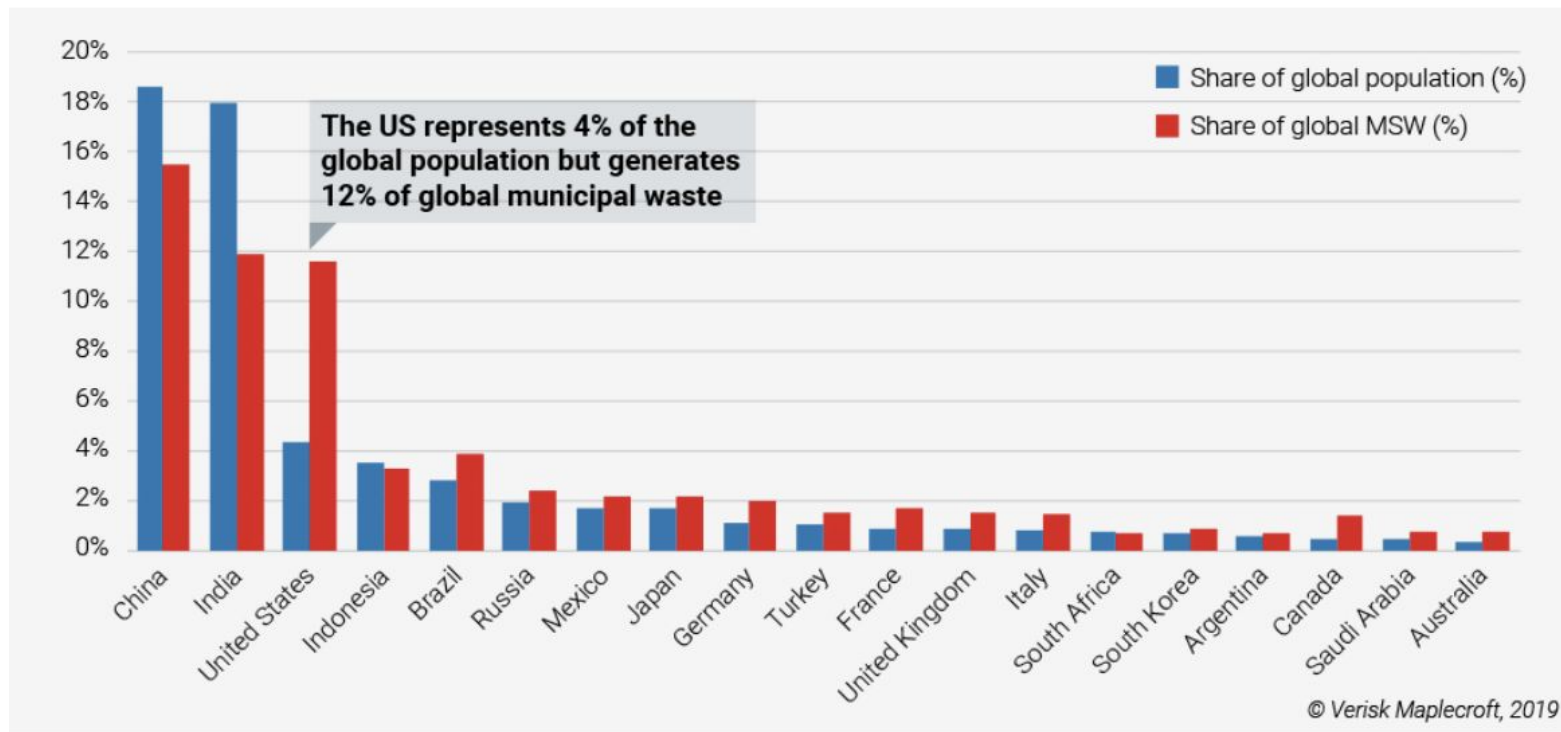
6.7 POUNDS

of municipal solid waste
per person, per day

The best way to manage waste is to generate less!

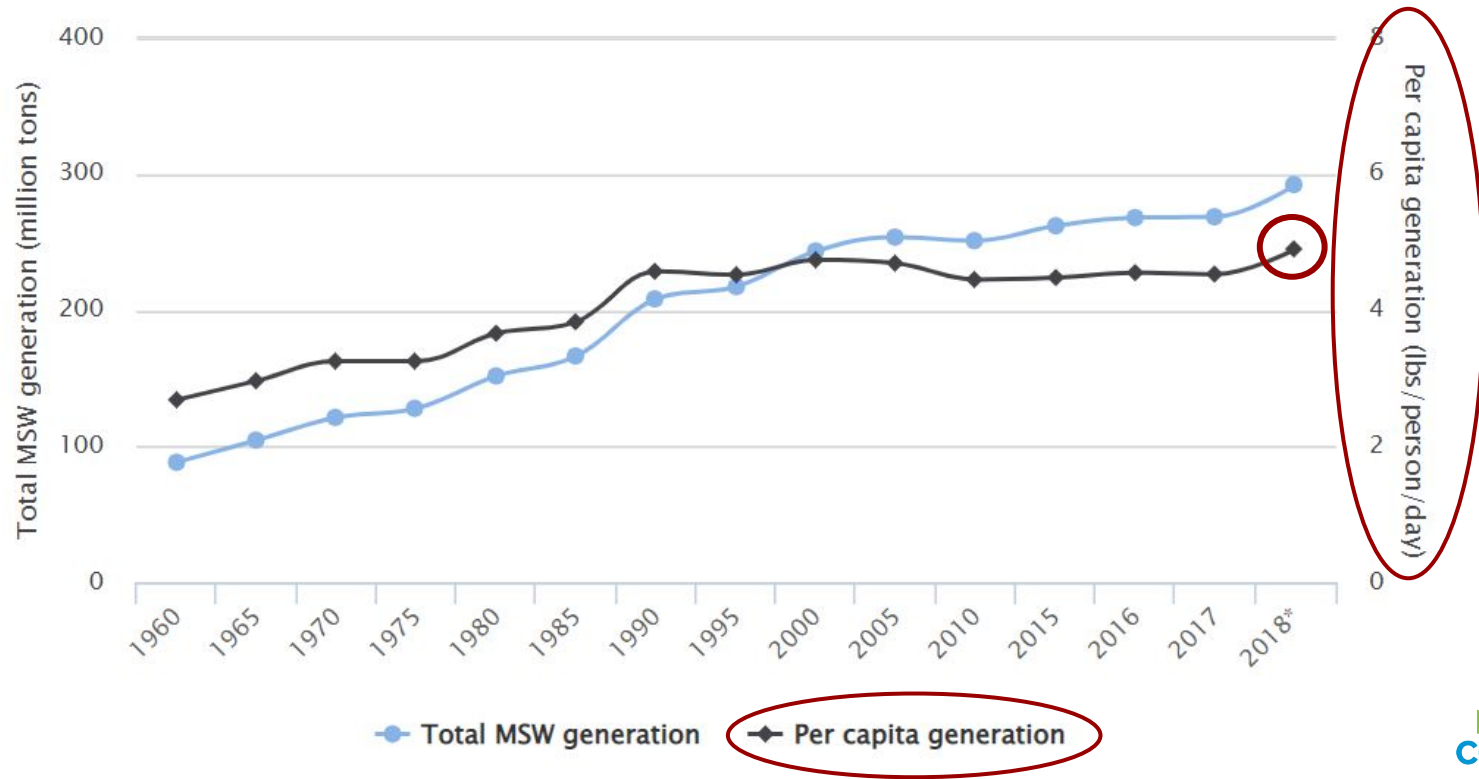
Global Population vs. Share of MSW generation

(Source: Verisk Maplecroft, 2019)



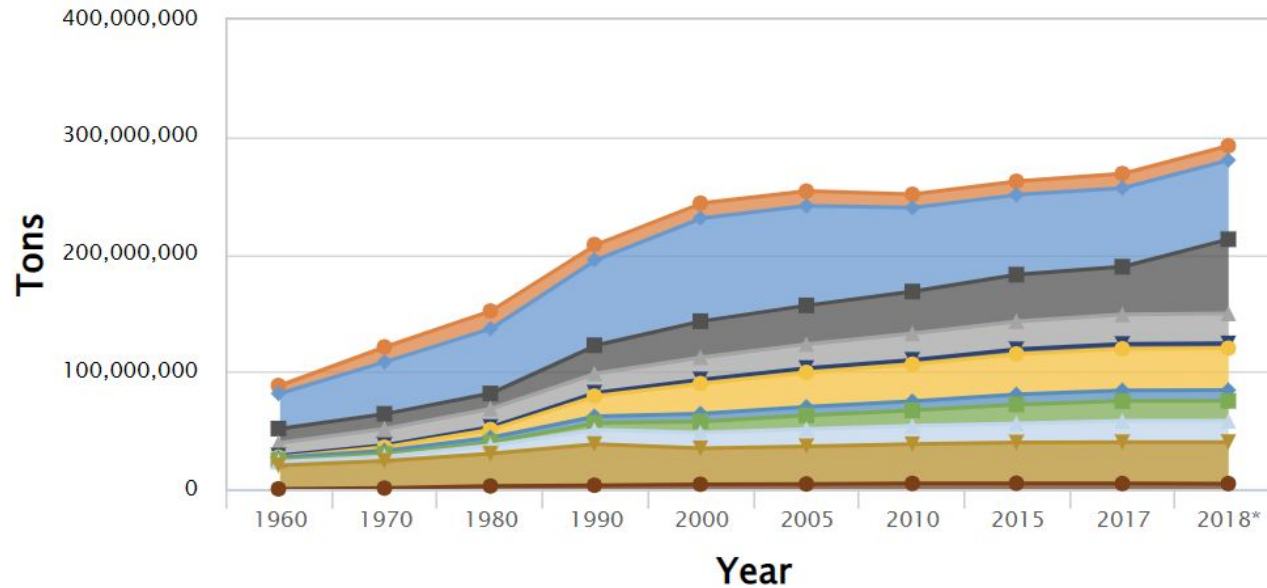
National Average [\(Source: EPA\)](#)

MSW Generation Rates, 1960–2018



National Average [\(Source: EPA\)](#)

Generation Tonnages, 1960–2018



Click on legend items below to customize items displayed in the chart

- | | | | | | |
|------------------|--------------------|------|----------------|----------------------|----------|
| Glass | Paper & Paperboard | Food | Metals | Misc Inorganic Waste | Plastics |
| Rubber & Leather | Textiles | Wood | Yard Trimmings | Other | |



National Average [\(Source: EPA\)](#)

2018

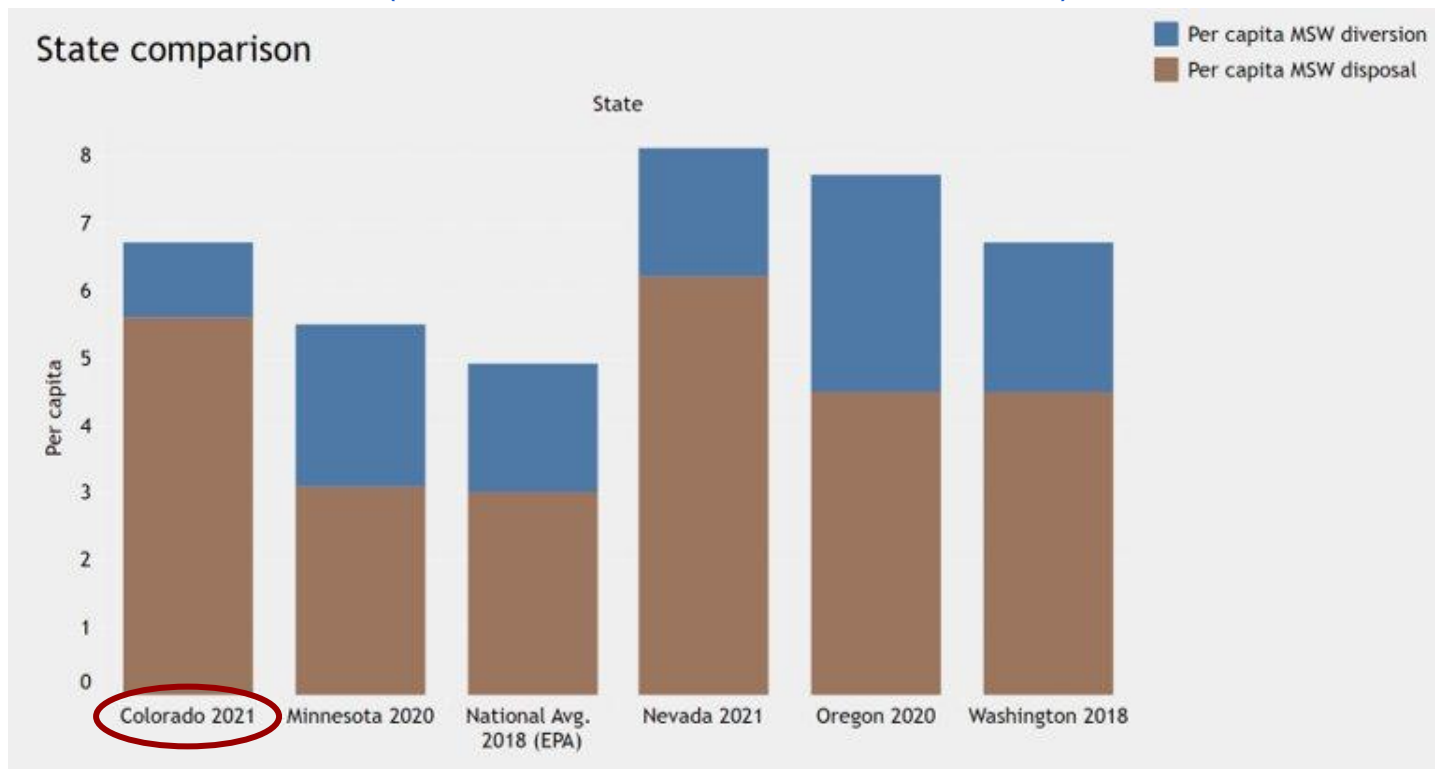
- Glass: 12,250,000 tons
- Paper & Paperboard: 67,390,000 tons
- Food: 63,130,000 tons
- Metals: 25,600,000 tons
- Misc Inorganic Waste: 4,070,000 tons
- Plastics: 35,680,000 tons
- Rubber & Leather: 9,160,000 tons
- Textiles: 17,030,000 tons
- Wood: 18,090,000 tons
- Yard Trimmings: 35,400,000 tons
- Other: 4,560,000 tons





Colorado and Peer State Waste Generation

(Source: CDPHE 2021 Diversion Data)

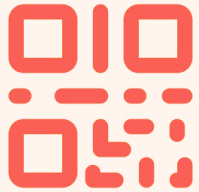


State & Local Policy



- Plastic Pollution Reduction Act
 - Lifting preemption and local ordinances
 - #SkipTheStuff
- Producer Responsibility for Recycling
 - Eco-modulation
- FRWD and RREO grants

slido



**Join the conversation at
slido.com
#9302164**

① Start presenting to display the joining instructions on this slide.



slido



**What does the future of reducing
disposables and reuse in
Colorado look like to you?**

① Start presenting to display the poll results on this slide.



slido



**What sectors in your area
could/should consider waste
reduction strategies?**

① Start presenting to display the poll results on this slide.



Innovations in Waste Reduction

REUSE

REPAIR

RESALE

RENTAL



slido



What specific waste material types in your sector do you hope to see reduced?

① Start presenting to display the poll results on this slide.



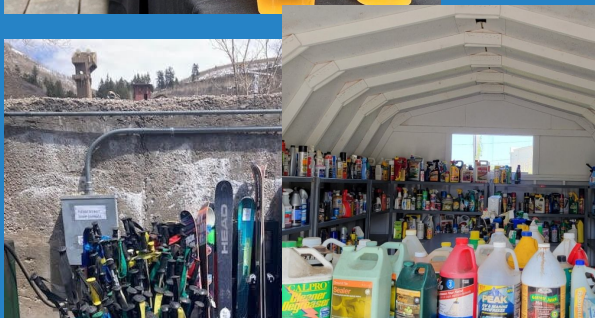
slido



What hard-to-recycle materials within your location would benefit from an innovative reuse initiative?

① Start presenting to display the poll results on this slide.

Reuse



Examples:

- Rcup - **Reusable cup**
- DeliverZero - **Reusable serviceware**
- Town of Vail **Ski Swap Center**
- Eco-Cycle CHaRM: Center for Hard-to-Recycle Materials + **Reuse Center**
- GreenSheen Paint

Repair



Examples:

- The Boulder U-Fix-it Clinic / Repair Cafes
- The Restart Project - **Repair Events**
- Fort Collins **Bike Repair Co-op**
- The Fixery (Minneapolis, MN) - **Electronics Repair**
- Patchwork Initiative - **Textiles Repair**

Resale



Examples:

- ARCThrift Stores - **Thrift stores**
- Habitat for Humanity ReStores - **Furniture Resale**
- ReCreative Denver - **Art Materials Resale**

Rental



Examples:

- West Philly **Tool Library** (Philadelphia, PA)
- The Share Shed (Totnes, UK) - **Etc. gear rental**
- Colorado Kitchen Share - **Cooking equipment rental**
- Toybrary Austin (Austin, TX) - **Toy Rentals**

slido



Which innovative waste reduction strategy resonates the most with you?

① Start presenting to display the poll results on this slide.



slido



What are the “low-hanging fruit” material types to focus on to reduce or divert?

① Start presenting to display the poll results on this slide.



Waste Reduction Challenges & Opportunities



Summit for Recycling – Steamboat Springs, Colorado – May 22-23, 2023

Overview

- **Challenges & Opportunities**
 - **Cost**
 - **Access/Infrastructure**
 - **Education/Outreach**

Cost

Ask yourselves.....

- *What upfront costs are associated with initiating a waste diversion, zero waste, or circular reuse system program or programs?*
- *What are “justifiable” costs of waste aversion and diversion?*
- *What are the ongoing operational costs of managing zero waste and reuse programs?*
- *What are the potential cost savings associated with implementing a zero waste system or circular reuse system? For example, disposal fees.*
- *How does the long-term financial outlook of achieving waste aversion and diversion compare to current practices in terms of cost-effectiveness?*



Cost

Variables to consider

The Cost of Waste Diversion

What to Consider:

- Budget
- Location(s)
- Material Streams
- Operations
- Logistics



slido



**What does a successful
Zero Waste special event
look like to you?**

① Start presenting to display the poll results on this slide.



Cost

Waste diversion in the field

Waste Reduction and Cost in the Field

Breckenridge Oktoberfest - 2019, 2021, 2022



2019



2021



2022

Cost

Waste diversion in the field

Waste Reduction and Cost in the Field

2. AC Marriott, Frisco



YEST Sites Owner & Founder Kathryn Daughton with the salvaged mattresses

- 225 mattresses
- 48,000 pounds of scrap metal
- 100+ appliances and furniture pieces

*The costs of
doing things
wrong.....*



slido



What factors go into the cost of a zero waste event? For this example, let's say it is for a single day/5 hour event, with food and beverages served to 1,500 people?

① Start presenting to display the poll results on this slide.



slido



What are challenges to access/infrastructure for reuse initiatives?

① Start presenting to display the poll results on this slide.

slido



What are the primary obstacles for education and outreach in promoting reuse initiatives?

① Start presenting to display the poll results on this slide.

Next steps

- Save all of the Slido responses
- Form a working group (who wants to join) to create and share a report
- Continue the conversation!



Thank you!

Contact info

- Ryan J. Call - ryan@ecocycle.org
- Amelia Kovacs - ameliak@walkingmountains.org
- Beth Markham - bmarkham@vailgov.com
- Kat Slaughter - Kathryn@VERTSites.com; VERTSites@outlook.com



Not sure where to put
these. Potentially cut
questions below this slide -
Ryan



slido



What is the participant size and/or duration threshold for events to require Zero Waste?

① Start presenting to display the poll results on this slide.



slido



What does a successful restaurant transition to durables look like to you?

① Start presenting to display the poll results on this slide.



slido



How much does your material (compost or recycling) hauler charge for contamination in the material stream?

① Start presenting to display the poll results on this slide.

