

# GLASS TO GLASS DENVER

The only glass processing facility in Colorado

- Post-consumed and pre-sorted material from MRF's
- Located as a drop off site in Broomfield, CO
- Mixed whole bottle glass from Counties, Cities, bars, restaurants, hotels, and large events
- 2-4 weeks for a bottle to circulate in our local economy.
- 2 million bottles made per day



**Moving Communities  
Toward Zero Waste**

Colorado's  
Circular  
Economy

## From MRF Glass to Furnace-Ready Cullet





# Mixed Glass



# SUPPLIERS

Boulder County - Eco Cycle MRF	Gunnison County
City of Brush	High Country Recycling, Westcliffe
City of Durango	Kimball
City of Ft. Collins	Lake County
City of Grand Junction	Laramie Landfill
City of Greeley	Los Alamos County
City of Lakewood	Molson Coors
City of Laramie	Phoenix Recycling
City of Loveland	Pueblo Recycle Works
City of Northglenn	Repubic- Colorado Springs
CU Environmental Center	Repubic- Denver
Design 4 Recycle	Rocky Mountain Bottle Company
DIA	Santa Fe Solid Waste Mgt Agy - BuRRT
Don't Trash Glass	Southeast & East Central Recycling
Douglas County School District	Summit County Recycling
Eagle County MRF	Town of Lyons
Earth First Aid	Twin Enviro Services
Eco Cycle (CHARMS)	WM-Denver
EDS Waste Solutions	WM Larimer County
Goodwill	



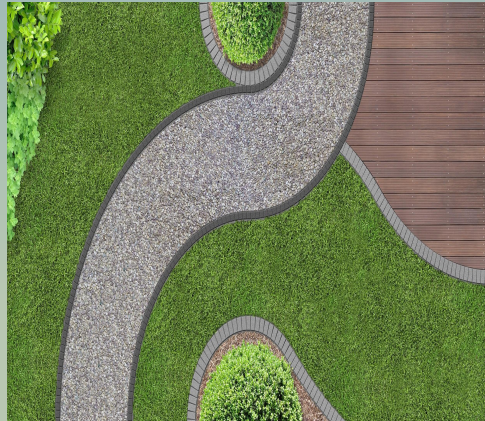
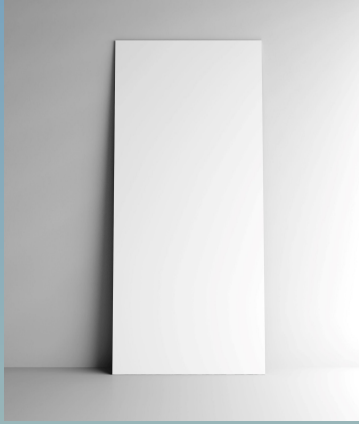
# BUYERS

Windsor, CO



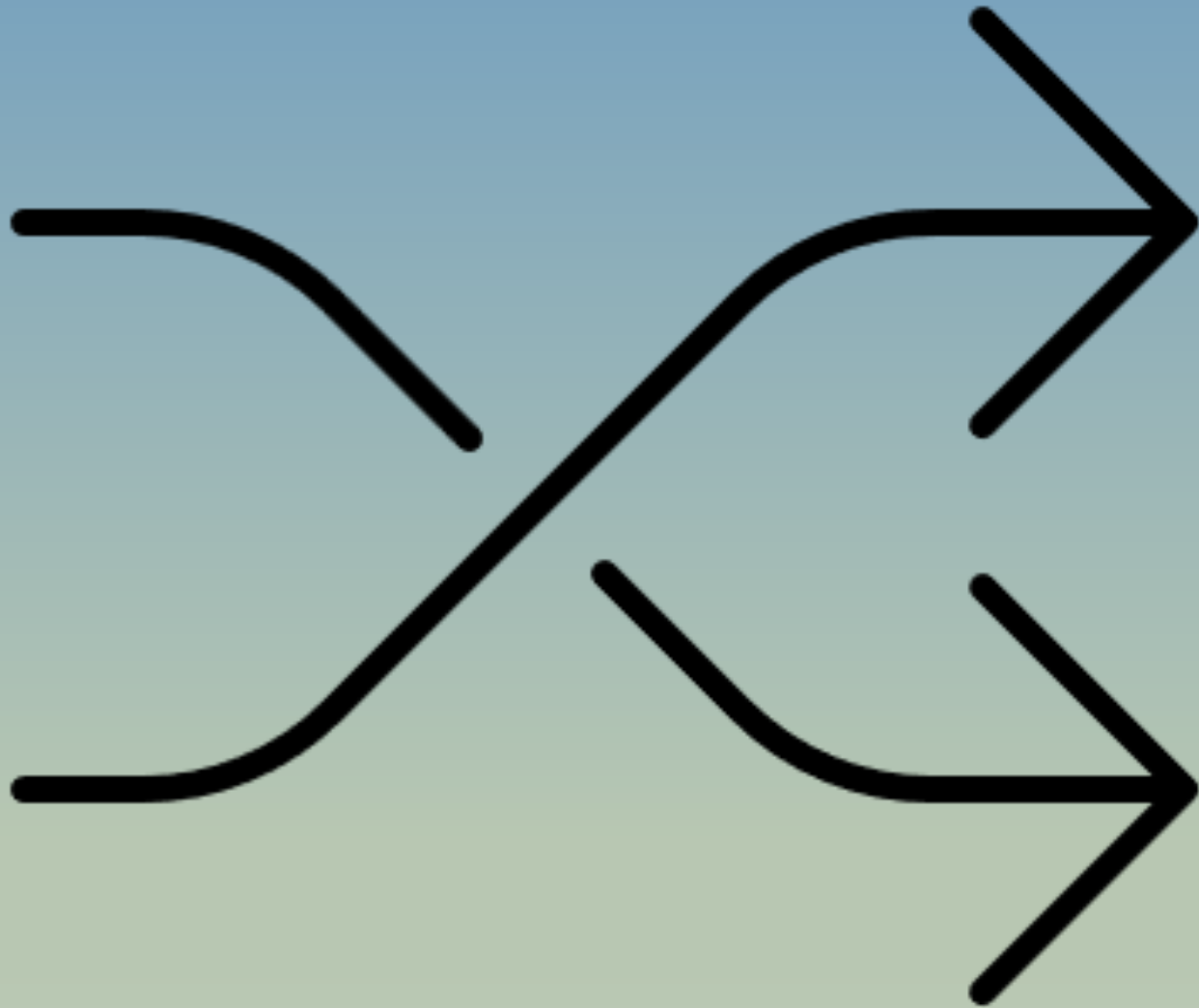
Wheatridge, CO





## FINES USES

- A byproduct from our cullet production and is used for:
- Fiber Glass Insulation
- Type X fire resistant wallboard
- Fluorescent bulbs
- Window glass
- Concrete
- Pavement(glassphalt)
- Construction fill
- Wall filler
- Bedding for pipes
- Sandblasting



2024  
PRODUCTION  
**46,000 TONS**  
OF MATERIAL  
PRODUCED

**25,000 TONS**  
OF CULLET



# Glass Recycling Facts



**ENERGY COSTS DROP 2-3% FOR EVERY 10% CULLET USED IN THE MANUFACTURING PROCESS**



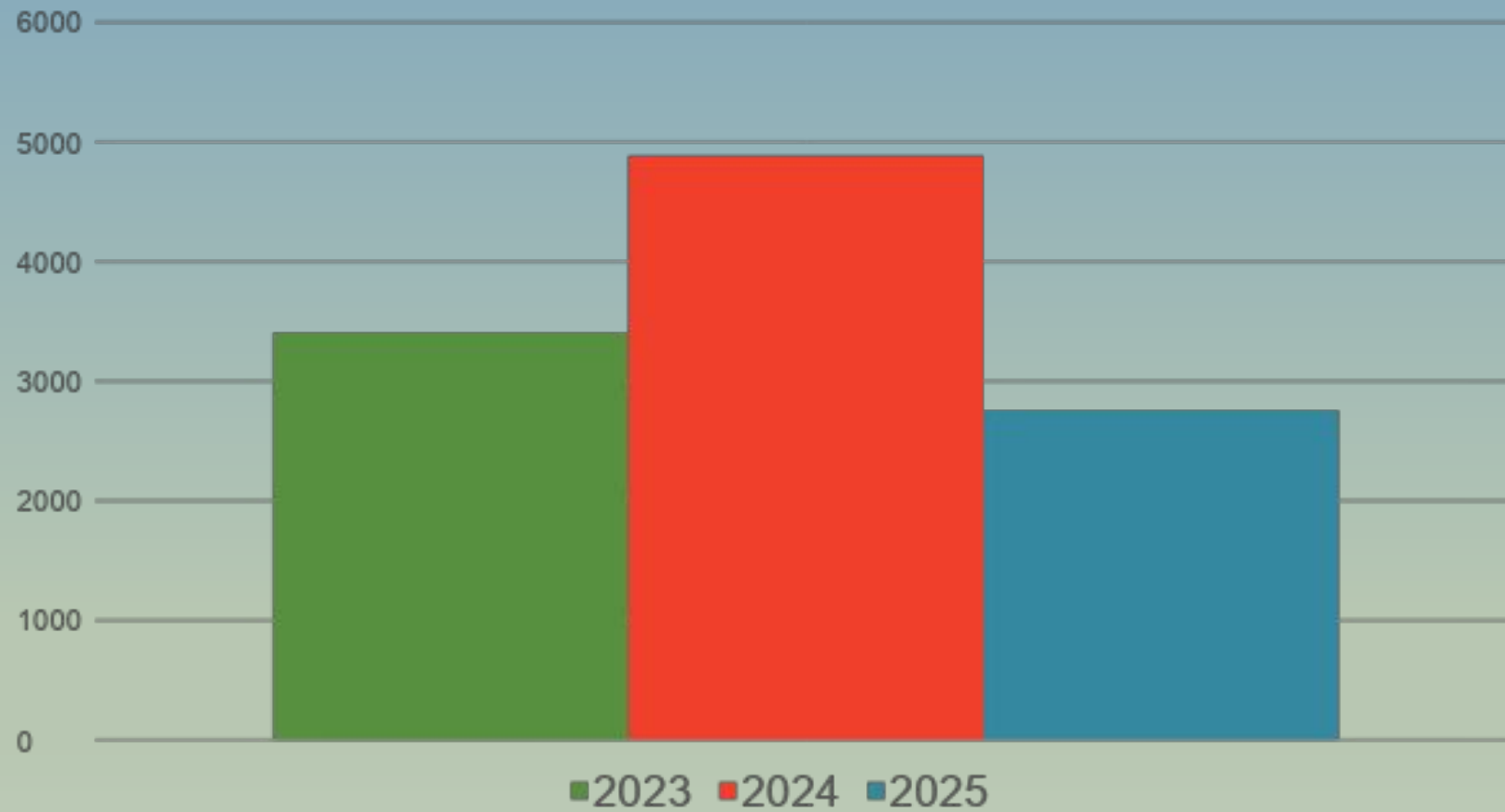
**VIRGIN MATERIAL FROM WY  
MELTS AT 3000, CULLET MELTS AT  
1500**



**OVER A TON OF NATURAL  
RESOURCES ARE SAVED FOR  
EVERY TON OF GLASS RECYCLED**

# Colorado Growth

MIXED GLASS 2023-2025



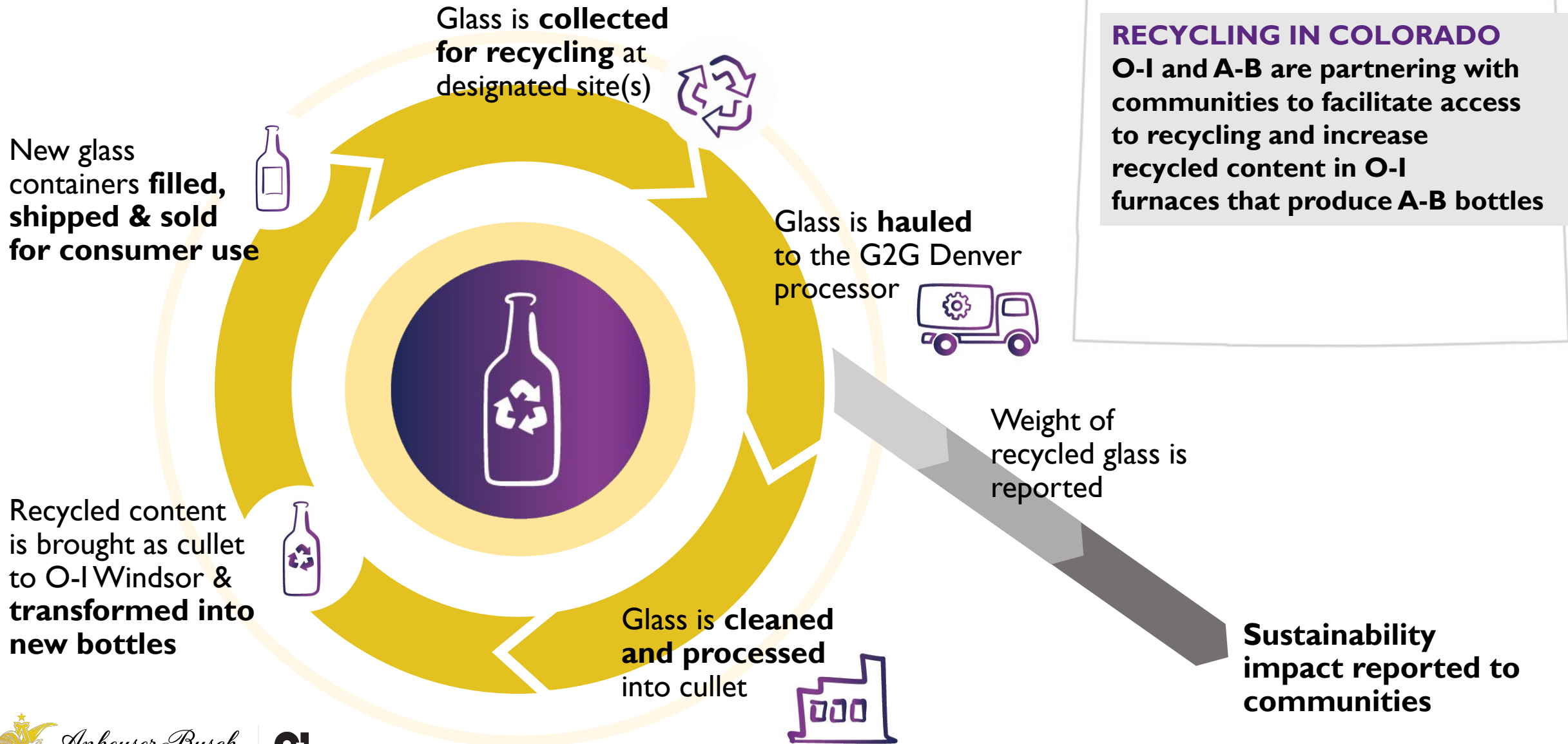




**Glass to Glass New Programs**  
**Anheuser Busch – OI**  
**Don't Trash Glass**



# The O-I & A-B Recycling Partnership



And what a difference 1-year makes....



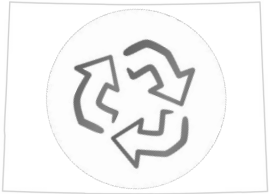
# Community Benefits



Opportunity to provide residents with access to an effective\* method of glass recycling



O-I/G2G will coordinate the most cost-effective hauling options possible



Enables the development of a local recycling ecosystem



Community support for the sustainability efforts of locally-based companies



Bins will be donated at no cost to participating communities



Volumes collected through the program will be reported to communities





glass  
packaging  
institute

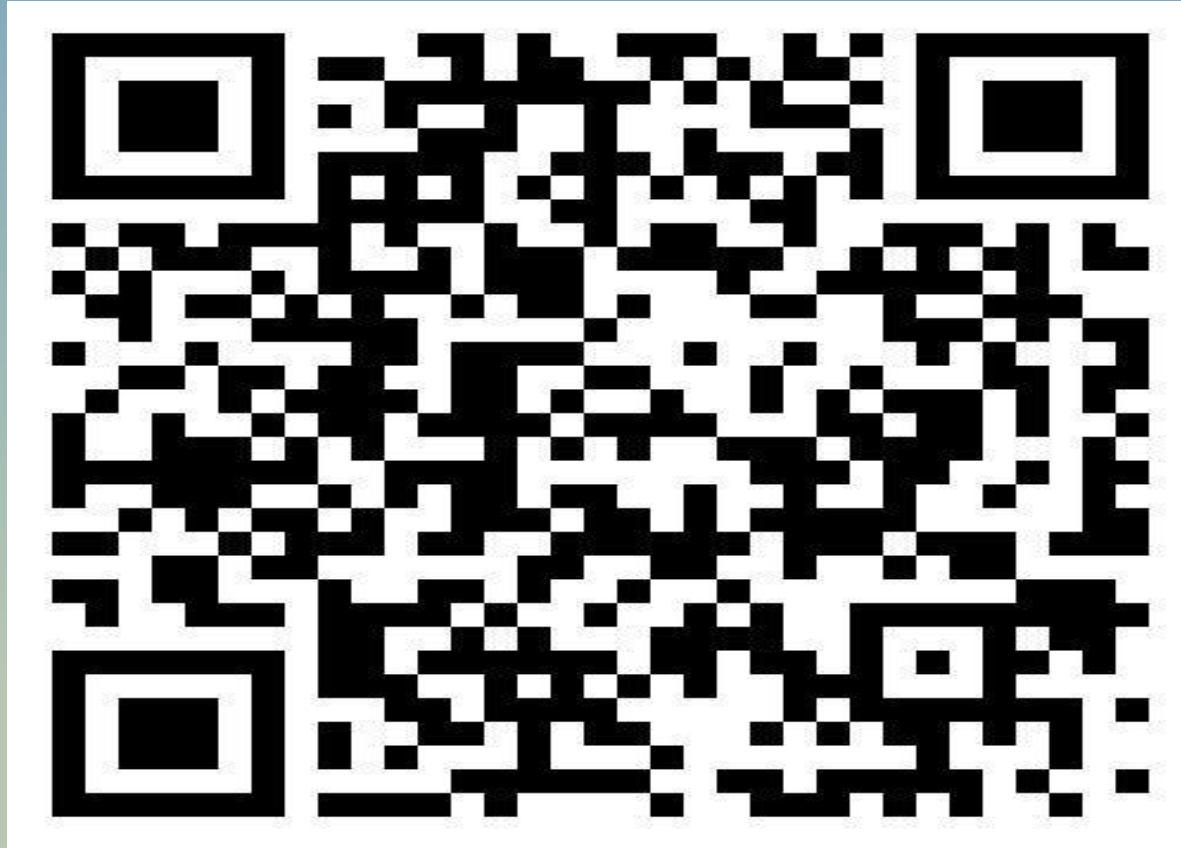
GLASSKING  
RECOVERY ♻️ RECYCLING



DON'T TRASH  
GLASS

# Don't Trash Glass Program

# Don't Trash Glass Program





# City of Glenwood Springs: Multi-stream source separated recycling drop-off center downtown

Staffed 40 hours/week by Recycle Tech Bayley  
Accepts glass, cardboard, paper, food waste,  
clothing, e-waste, light bulbs & more







# Glass storage pile at South Canyon Landfill

- 5 miles outside city
- This glass comes from our drop-off center and City of Aspen's drop-off center
- About 75 tons per year
- We are open to accepting glass from others, no one else nearby is collecting glass that we know of
- Most curbside here is single stream





Picking plastic out of the storage pile before loading the glass

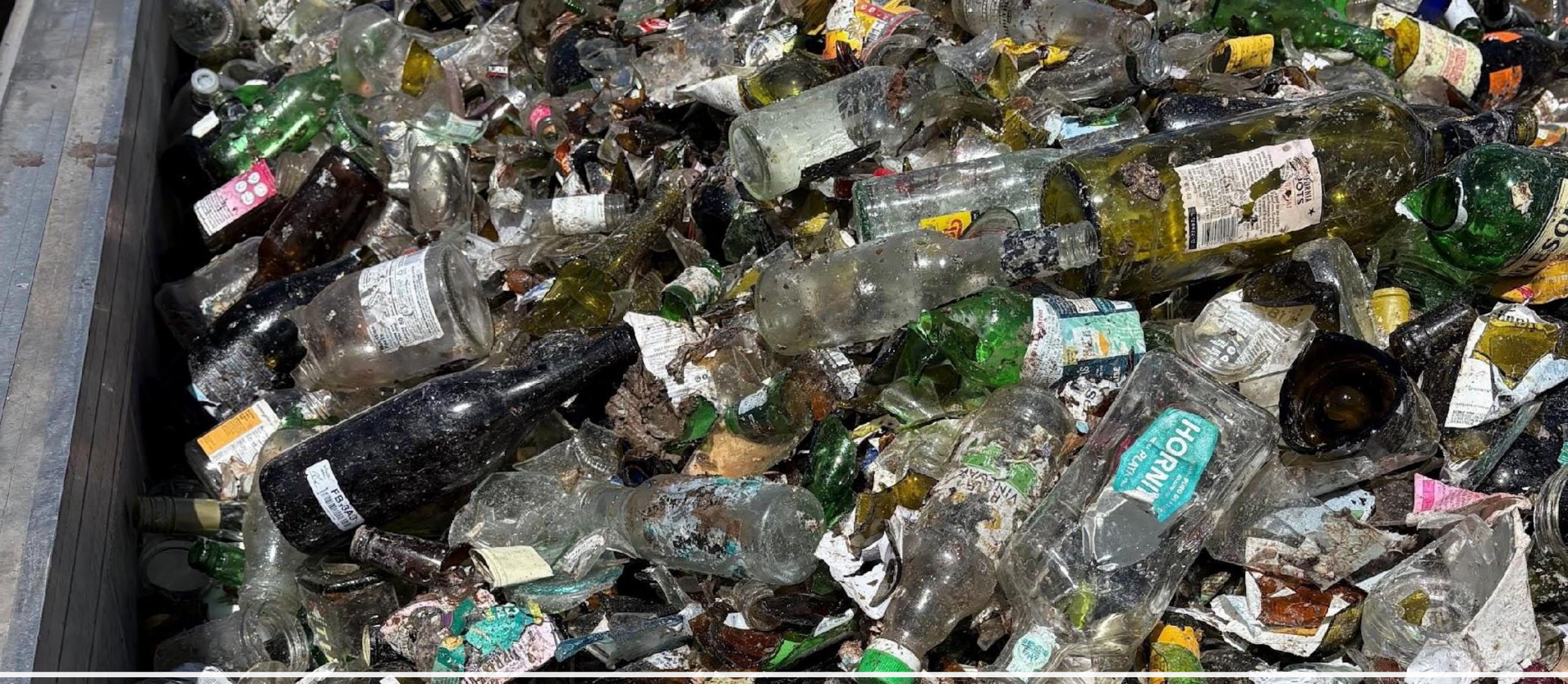






This is the storage pile where we keep the glass, pictured is about 4 months-worth of glass





Waste glass after being loaded onto the truck to Broomfield



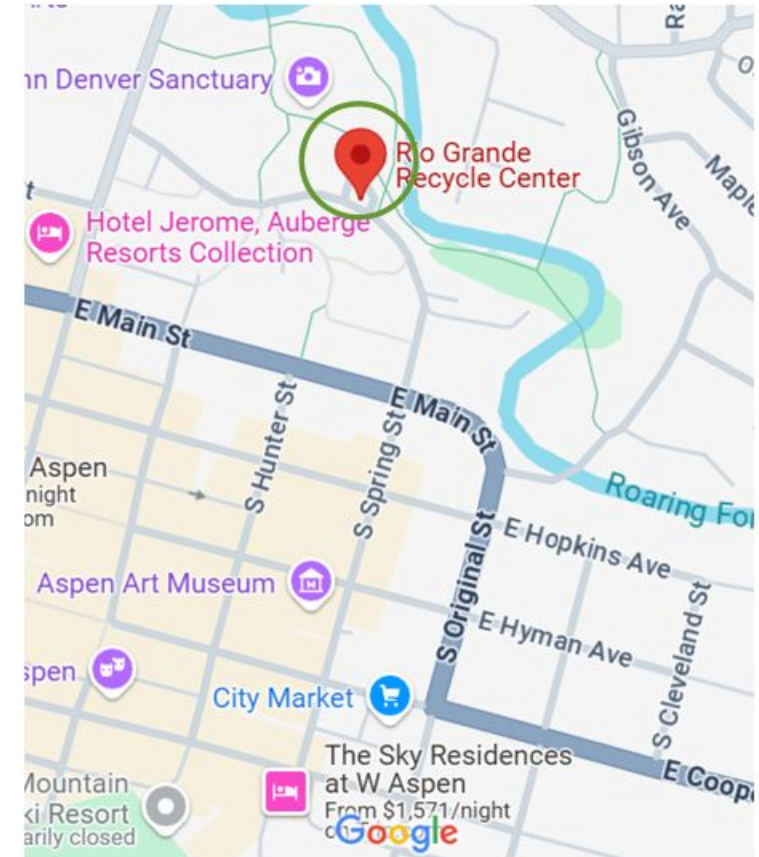




- Grabow Trucking, Yahn Grabow owner (his son Gus in picture)
- Each load is about 25 tons
- Back-haul when convenient with their other deliveries to avoid an empty trip
- Liz's email: [liz.mauro@cogs.us](mailto:liz.mauro@cogs.us)  
Get in touch if you want to bring us glass



# Local Drop-off site City of Aspen





# Cost and usage

- City of Aspen funded
- Twice a year service: June and December
- Hauling from Aspen to South Canyon Landfill
- Open to the public 24/7



## COST

**2024:** \$975 per pick-up  
**\$1,950** per year  
**2023:** \$967,20 per pick-up  
**\$1934,40** per year



## USAGE

**2024: 16,38 tons** (6,24 T June  
and 10,14 T December)  
**2023: 11,91 tons** (6 T June and  
5,91 T December)

# **Thank you!**

**Celene Peck-Andreano -  
celene.peck-andreano@glasstoglass.com**

**Liz Mauro - elizabeth.mauro@cogs.us**

**Jimena Baldino - jimena.baldino@aspen.gov**